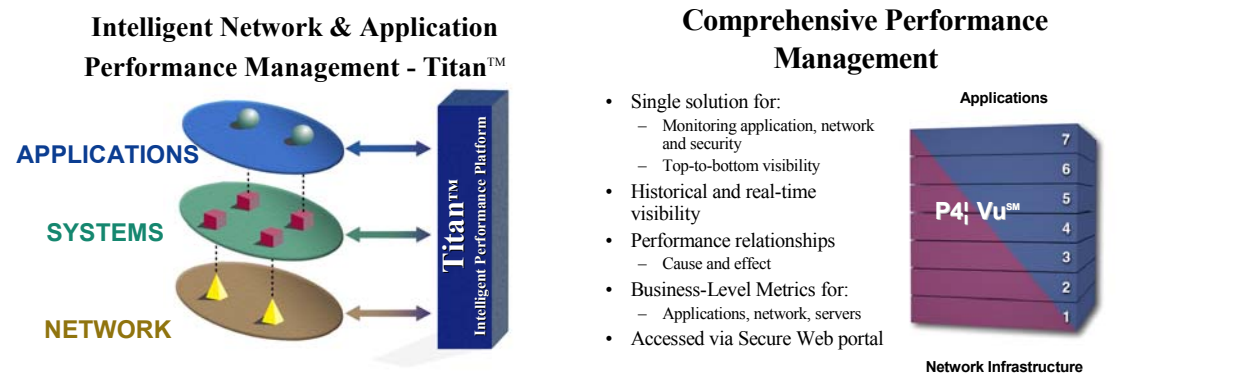




Titan™ – Intelligent Performance Platform
P4 | VuSM DASHBOARD
Network, Systems & Application Management



P4 Performance Management's Intelligent Performance Platform, Titan™, and its customer Web-portal P4 | VuSM Dashboard, integrate multiple innovative components and capabilities to keep an enterprise's network, applications and business processes working together effectively. P4 remotely provides 24/7/365 management from its **Global Enterprise Management Center (GEMC™)**, while providing a single secure Web portal you can access to monitor and measure the enhanced delivery of carrier-class business services across your multi-service, multi-vendor enterprise wide network.



P4's Performance Management service provides top-to-bottom visibility and end-to-end control over an enterprise's entire infrastructure (Data Center to Metro Optical Network to Branch Office Desk top). Titan™ Intelligent Network, System & Application Performance Management and Reporting Service portfolio includes:

- ▶ **Application Performance Management** - delivering monitoring and diagnostic capabilities to help you obtain peak performance from your key Internet, groupware, database and business applications such as email and billing transactions.
- ▶ **Network Performance Management** - providing on-demand access to overall network performance information to help you pre-empt problems, optimize resources and plan for maximum ROI across your multi-vendor wireless or wire-line infrastructure.
- ▶ **Real-time Event Analysis & Asset Management** - delivering the real-time, visual monitoring, measuring and analysis of network performance using operations thresholds you prioritize. This helps you pinpoint problems as they occur and pre-empt others.
- ▶ **Authenticated, Web Accessible, Dashboard** - Online Service Level's are available via a secure Web portal that delivers real-time performance information in a consolidated, customized format.

P4 | VuSM Dashboard



Personalized Dashboard Views

- ▶ Network & Application Performance
- ▶ Real Time Event Analysis
- ▶ Transaction Monitoring

Performance data collected by these advanced components is seamlessly merged for efficient management of every IT operations level. The system's unique, Web-based "P4 | VuSM Dashboard" portal - a customizable window into your operations -- gives you a personalized view on virtually any aspect of your network and applications performance. P4 | VuSM Dashboard also provides access to the Asset Management Service (AMS).

Value Description

The P4 Performance Management's Titan™ with P4 | VuSM Dashboard service enables you to:

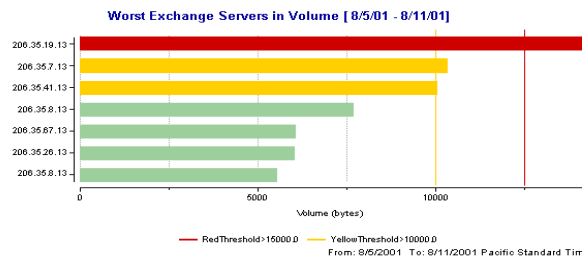
- ▶ Leverage powerful, fully integrated capabilities to optimize network, applications performance
- ▶ Access real-time, infrastructure-wide network transport and business applications performance data at-a-glance
- ▶ Pre-empt network and application problems before they impact your users
- ▶ Simplify analysis and planning with detailed performance reports tailored to meet the needs of every organizational level
- ▶ A secure Web enabled Dashboard that summarizes the performance of your network and applications, customized for different levels of the organization
- ▶ Manage all of your assets, network, desktop and service quality from a single central location
- ▶ Maximize network uptime by efficiently tracking problems to their source
- ▶ Scale management solutions to accommodate any size environment
- ▶ Begin realizing immediate ROI with easy, service model deployment
- ▶ Cut ongoing ownership costs with an economical monthly operating expense model
- ▶ Protect your investments via smooth interoperability with existing management systems

Features

Application Performance Management

- ▶ Flexible monitoring and control of custom and standard IP-based applications from desktop to destination server
- ▶ Heat charts graphically display application status for rapid fault detection and user impact monitoring
- ▶ Drill-down reports provide details needed to locate, isolate and resolve problems
- ▶ Real-time alerts indicate when performance thresholds are crossed
- ▶ Diagnosis and prescription capability analyzes problems and recommends solutions
- ▶ Embedded Agent Software lets you view problems from the user perspective

Application Usage Reports



Best/Worst Performance for Exchange Server in Last 12 Weeks

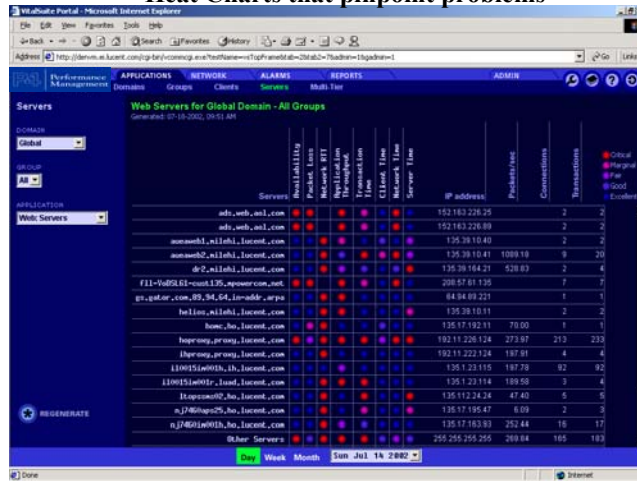
Name	Volume (bytes)	Response Time 75th percentile (msecs)
195.37.2.10	55972271.77	88.00
195.37.3.10	23288914.35	56.00
195.37.4.10	1938776.36	205.00
195.37.5.10	1929696.34	205.00
195.37.6.10	1927236.97	202.00
195.37.7.10	1926994.33	205.00
195.37.8.10	1719591.23	198.00
195.37.9.10	946120.80	179.00
195.37.10.10	941351.56	188.00
195.37.11.10	941268.17	196.00
195.37.12.10	940857.34	204.00
195.37.13.10	940631.94	212.00
195.37.14.10	940280.46	221.00
195.37.15.10	843665.22	236.00
195.37.16.10	842174.78	237.00

From: 8/10/2001 To: 9/8/2001 Pacific Standard Time

Network Performance Management

- ▶ Automated collection and aggregation of network-wide performance data
- ▶ Heat charts pinpoint emerging performance problems
- ▶ Standard configurable versatile reporting — real-time statistics for on-target troubleshooting; continuous operations data for monitoring service quality; high-level performance summaries; long-term trends for capacity planning
- ▶ Fully integrated, advanced reporting toolkit - provides access to all data sets, domain and group definitions; auto discovers new collector data added to isolate trouble spots, verify SLAs, improve resource utilization

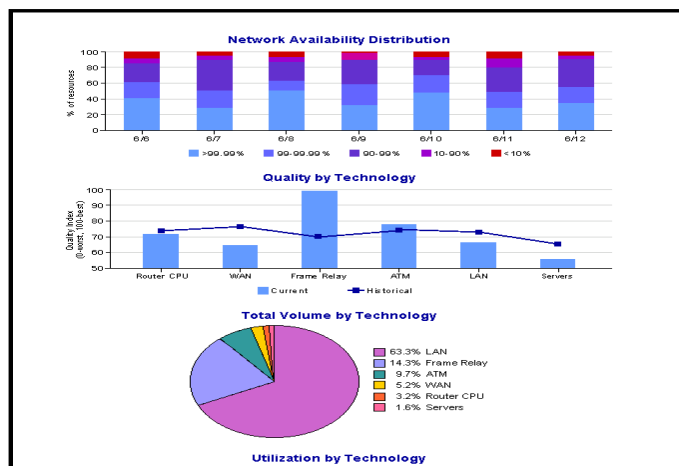
Heat Charts that pinpoint problems



Real-time Event Analysis and SLA Reporting

- ▶ Continuous monitoring of WAN, IP, Frame Relay and ATM traffic, elements and interfaces
- ▶ Powerful event analysis tools filter, analyze and graphically summarize raw performance data
- ▶ Instantaneous event notification via screen displays, e-mail/pager and trap messages
- ▶ Real-time visualization via customizable geographic topology maps, path analysis maps, graphs, tabular reports; immediate drill-down for details
- ▶ Default, user-configurable and adaptive (based on historical data) thresholds — device-specific or network-wide

SLA Reports



For more information: Call P4 at (919) 783-1500 or visit us online at www.p4performance.com